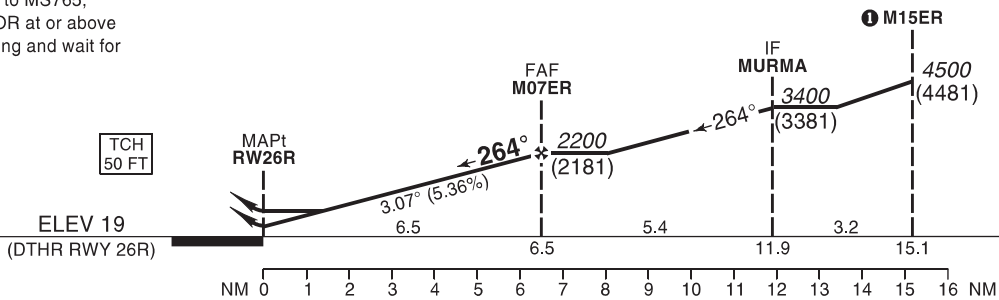


MISSED APPROACH:

Climb on runway heading to MS750, turn RIGHT to MS755, turn RIGHT to MS760, turn RIGHT to MS765, turn RIGHT to MCT VOR at or above 6000 and join the holding and wait for ATC instructions. MAX IAS 220 KT.

TA 13000



STRAIGHT-IN APPROACH		A	B	C	D	ADVISORY INFORMATION ONLY							
LNAV/VNAV	OCH	390	400	410	480	NM to RW26R	1	2	3	4	5		
	DA(H)	410 (390)	420 (400)	430 (410)	500 (480)	ALT (HGT)	720 (700)	1050 (1030)	1380 (1360)	1700 (1680)	2030 (2010)		
	VIS/RVR	1100m											
LNAV	OCH	510				GS	kt	80	100	120	140	160	180
	MDA(H)	530 (510)				FAF-MAPt	min:s						
	VIS	1500m		1600m		ROD: 5.36%	ft/min	434	542	651	759	868	976
CIRCLING (HAA)* ②		A	B	C	D	Not Authorized							

① For INITIAL APPROACH to M15ER see Transition Chart.

② Circling not authorized.

③ Timing not authorized for defining the MAPt.

RNP Approach required.

LNAV/VNAV Temperature: Min -15°C
Max 50°C

Holding Instruction/Areas RNP RWY 26R

Path descriptor	Fix identifier	Inbound course M (T)	Leg Distance	Turn direction	Minimum altitude	Maximum altitude	Speed	Magnetic variation	Navigation performance
Hold	MCT VOR	091° (092.0°)	1 MIN	L	6000		210 KT	1.4°E	

Route Description: RNP RWY 26R

Path descriptor	Fix identifier	Flyover	Course Magnetic (True)	Turn direction	Altitude	Speed limit	Magnetic variation	Distance	Navigation performance
IF	M15ER				+4500	220 KT	1.4°E		RNP APCH
TF	MURMA		264° (265.1°)		+3400		1.4°E	3.2	RNP APCH
TF	M07ER		264° (265.1°)		+2200		1.4°E	5.4	RNP APCH
TF	<u>RW26R</u>	Y	264° (265.1°)		+69		1.4°E	6.5	RNP APCH

MISSED APPROACH

CF	<u>MS750</u>	Y	264° (265.0°)			220 KT	1.4°E		RNP APCH
TF	MS755		290° (291.0°)	R		220 KT	1.4°E	13.0	RNP APCH
TF	MS760		020° (020.9°)	R		220 KT	1.4°E	6.6	RNP APCH
TF	MS765		085° (085.9°)	R		220 KT	1.4°E	8.1	RNP APCH
TF	MCT VOR		162° (163.7°)	R	+6000	220 KT	1.4°E	12.6	RNP APCH
HM	MCT VOR		091° (092.0°)	L	+6000	210 KT	1.4°E	1 min	RNP APCH

Aeronautical Data Tabulation: RNP RWY 26R

Waypoint / Fix	Latitude	Longitude	Latitude (MIN)	Longitude (MIN)	Notes
M15ER	N23°37'50.73"	E058°34'14.98"	N23°37.846'	E058°34.250'	
MURMA (IF)	N23°37'34.20"	E058°30'44.72"	N23°37.570'	E058°30.745'	
M07ER (FAF)	N23°37'06.15"	E058°24'49.95"	N23°37.103'	E058°24.833'	
RW26R (MAPT)	N23°36'32.11"	E058°17'43.65"	N23°36.535'	E058°17.728'	
MS750	N23°36'11.91"	E058°13'32.53"	N23°36.199'	E058°13.542'	
MS755	N23°40'50.95"	E058°00'20.96"	N23°40.849'	E058°00.349'	
MS760	N23°47'02.00"	E058°02'55.00"	N23°47.033'	E058°02.917'	
MS765	N23°47'36.75"	E058°11'45.47"	N23°47.613'	E058°11.758'	
MCT VOR	N23°35'28.04"	E058°15'36.48"	N23°35.474'	E058°15.607'	

Non precision final approach 3.07° (5.36%).